



Nepal Health Sector Support Programme III (NHSSP – III)

**Joint Hospital Assessment Report – Karnali Province
Karnali Province Hospital, Birendranagar, Surkhet
Final Draft
26 August 2019**



Disclaimer: -

This material has been funded by UKaid from the UK government; however the views expressed do not necessarily reflect the UK government's official policies"

Table of Contents

Abbreviations

Preface (to be signed by the Secretary of the Karnali Province MoSD)

- 1 Executive Summary (joint section)**
- 2 Introduction (joint section)**
 - 2.1 Background
 - 2.2 Assessment Methodology and Process
- 3 Health Human Resources and Service Delivery (SSBH)**
 - 3.1 Availability and Readiness of Services
 - 3.2 Human Resources
 - 3.3 Information Systems
 - 3.4 Procurement, Storage and Inventory Management
 - 3.5 General Management
 - 3.6 Service Delivery
 - 3.7 Quality of Care
 - 3.8 Gaps and Opportunities
- 4 Infrastructure (NHSSP)**
 - 4.1 Site
 - 4.2 Existing Buildings
 - 4.3 Findings
 - 4.4 Gap Analysis
 - 4.5 Interventions
 - 4.6 Recommendations
- 5 Conclusion (joint section)**

2 Introduction

2.2 Assessment Methodology and Process

A technical team from the Nepal Health Sector Support Programme 3 (NHSSP) has been engaged in developments at Karnali Province Hospital since 2018, working at the request of the Ministry of Social

Development (MoSD).The team has been involved in assessments, problem analysis and putting forward design solutions.

The general methodology can be summarised as:

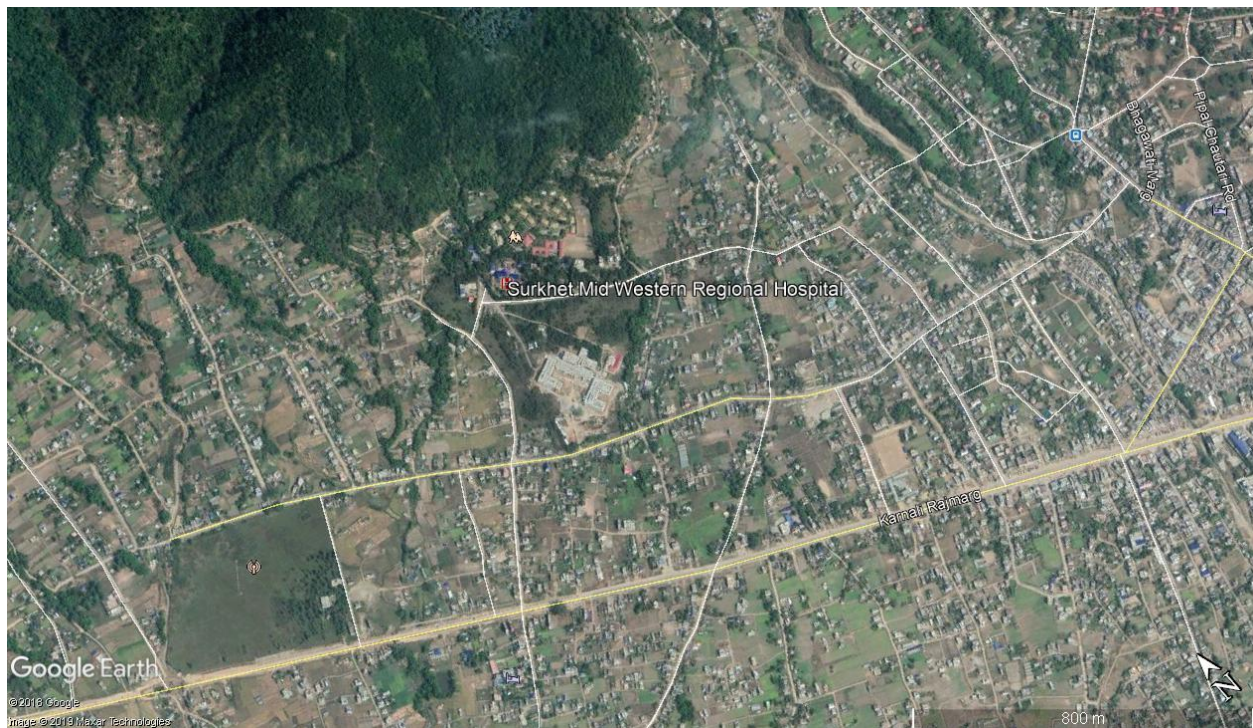
- I.1 Collection of data and information:** Collection of secondary data on the hospital from sources including Department of Urban Development & Building Construction (DUDBC) records – Divisional Offices and Provincial Project Implementation Units, hospital records, reports from previous project consultants.
- I.2 Field assessment tools:** The NHSSP team used its standard checklist and needs assessment tool to gather information on buildings on the site.
- I.3 Field assessment exercise:** The NHSSP technical experts have carried out a number of field assessments, including a very intensive need assessment in March 2015 facilitated by the hospital management and many site visits then after for monitoring the construction activity time to time.
- I.4 Consultation meetings:** The NHSSP team have engaged closely with the Provincial Minister, representatives of the MoSD, hospital management, staff, the local authority and other relevant stakeholders to secure information on proposed developments, operational requirements, catchment areas, road networks, and future plans.
- I.5 Analysis of data and information:** The NHSSP team analysed the primary and secondary data against a range of factors, including Health Infrastructure Information System (HIIS) data, Geographical Information System (GIS) maps, existing drawings, health facility standards and categories drawn from Nepal Health Infrastructure Development Standards (NHIDS). This analysis identified infrastructure and service delivery gaps, problems and key issues.

4 Infrastructure (NHSSP)

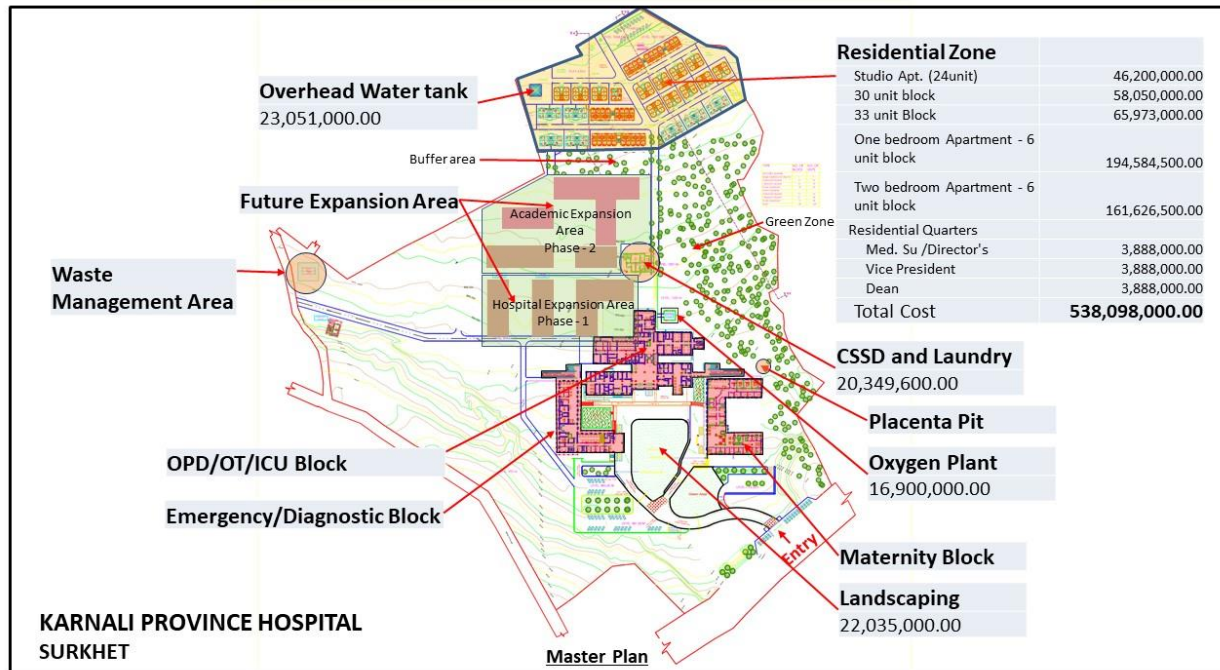
4.1 Site and buildings

Karnali Province Hospital is located in Birendranagar, the provincial capital of Karnali province. It was previously the Mid-Western regional hospital before it was converted to today's form. Construction of additional buildings began in 2061/62, but the project took over 10 years due to lack of space of many of the hospital functions. The district hospital in Surkhet was upgraded as a regional hospital for the mid west region (MWR) in the year 2005. By a decision of MOHP, GoN the hospital in Surkhet was declared a Regional Level Hospital in the year 2062/11/07. The hospital premise was shifted to Regional Health Training Complex in Kalagaun, Surkhet. The buildings in this complex was constructed as the regional training center and was operating as Mid-western Regional Training Centre before the Surkhet Hospital was moved here.

The Hospital is currently being expanded to secondary level status, with additional floors to existing buildings and new structures being built. A new building with a 300 bed capacity has been completed and handed over recently to the Government. The new Hospital is located on a large green field site located on the western side of the town of Surkhet. The site is located on the south side of the existing hospital across the road.



Location Map of Karnali Province Hospital



Site Map of Karnali Province Hospital

4.2 Existing Situation and Services

The Hospital offers comprehensive emergency obstetric and neonatal care services, orthopedic services, pediatric services, emergency service, dialysis service, laboratory and x-ray services. Surgeries such as C-section, hernia and hydrocele are performed in the Hospital. OPD patient registration is computerized and connected with central server and billed based on information fed from various service points.

4.3 Assessment Findings

The NHSSP team assessment showed that the current and planned rapid expansion of the hospital had focused on provision of critical tertiary level services, but had paid less attention to other utilities and site components that would form important parts of a resilient and integrated development of the site. More details of these aspects are set out in Section 4.4 Gap Analysis.

4.4 Gap Analysis

The assessment identified the following components to strengthen the integrated development of the site:

- Improved medical oxygen supply to meet the expansion of health services
- Enhanced gatehouse (reflecting local heritage and architecture)
- Need for improved accommodation for Central Sterile Supplies Department (CSSD) and Laundry
- Landscaping and public open space to improve access, patient and visitor experience of the site
- Improved water supply to meet the expansion of health services and residential accommodation
- Expanded residential accommodation for staff to meet increased service provision requirements, and to promote staff attraction and retention

The NHSSP team also assessed and specified the number and type of equipment needed to accompany these new components.

4.5 Interventions

The NHSSP team has identified and proposed the following interventions to support the continued extension of the Hospital:

- **Medical Oxygen Supply:** Design, specification and cost estimate for the supply and installation of new Pressure Swing Adsorption (PSA) Oxygen Generation System have been submitted to the MoSD
- **Gate and guard house:** Design and cost estimates for the new entrance gate and guardhouse (see Figure 1) have been submitted to the MoSD.,



Figure 1: Design of new entrance gate and guard house at Karnali Province Hospital

- **Landscaping and public open space:** Designs and cost estimates for landscaping and public open space works for the Central Courtyard (see Figure 2) and Maternity Block (Figure 3) have been submitted to the MoSD.

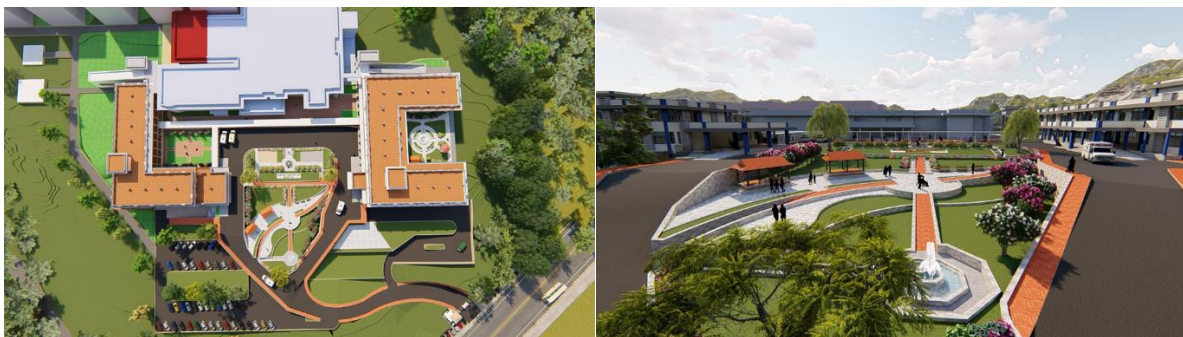


Figure 2: Landscaping and public open space Central Courtyard



Figure 3: Landscaping and public open space Maternity Block

- **Improved water supply:** the NHSSP team has submitted a design and cost estimate for a 300 m³ water tank to the MoSD.
- **Central Sterile Supplies Department (CSSD) and Laundry:** The NHSSP team have submitted designs and cost estimates for new CSSD and Laundry buildings. These designs are compliant with the Nepal Health Infrastructure Design Standards (NHIDS) and Standard Design Guidelines for Health Infrastructure 2017.
- **Residential accommodation:** The NHSSP team have submitted designs and costs estimates for extra residential quarters to the MoSD, covering 87 units Studio Apartment 6 x 11 unit one bedroom apartment, 6 x 7 unit two-bedroom apartment, 3 domestic residences.